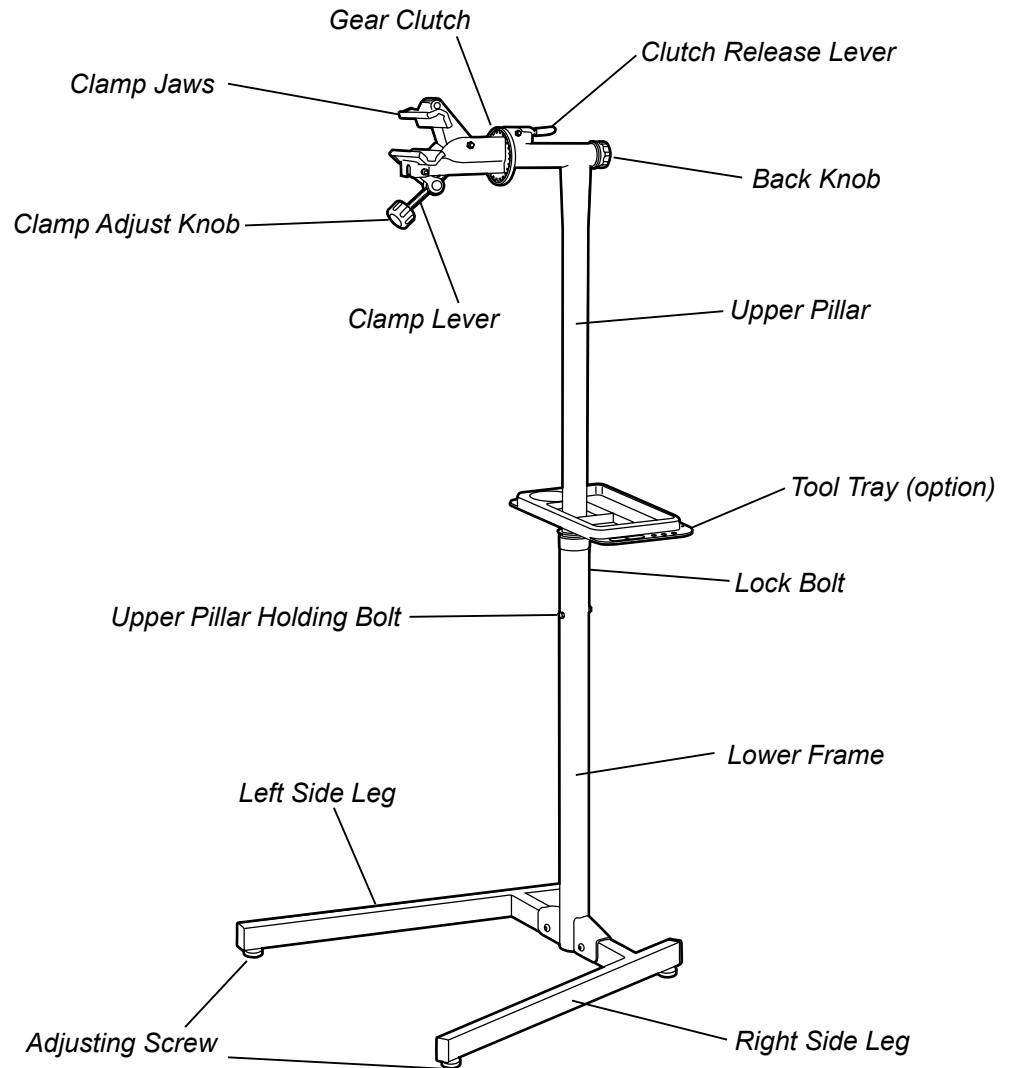
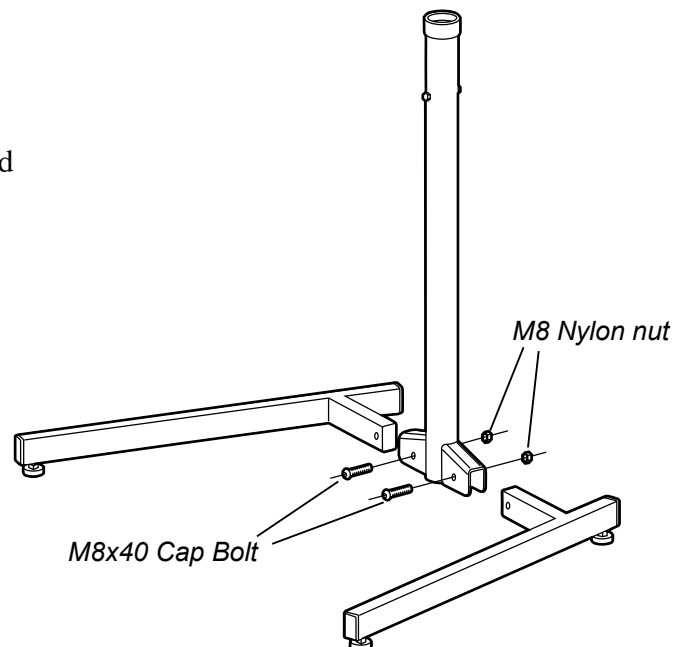


**PARTS NAME****HOW TO ASSEMBLE W-3100**

**Required Tools:** 1 x 13mm Spanner  
1 x 6mm Hex Wrench  
1 x 5mm Hex Wrench

**1**

Assemble both Legs to the Lower Frame with the supplied M8x40 bolts and M8 Nylon Nuts.

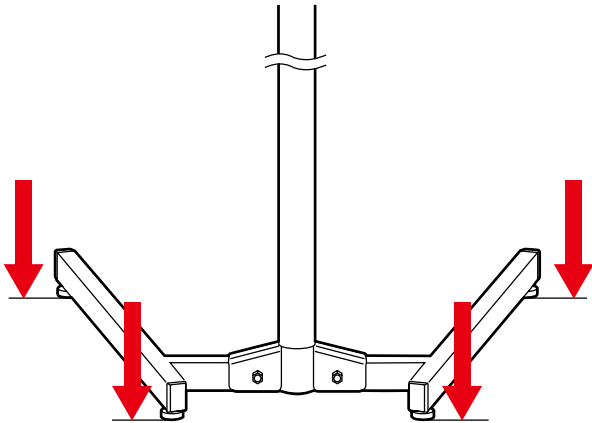


**2**

Place the assembled Lower Frame on the floor, and check if every Adjusting Screw is touching the floor perfectly.

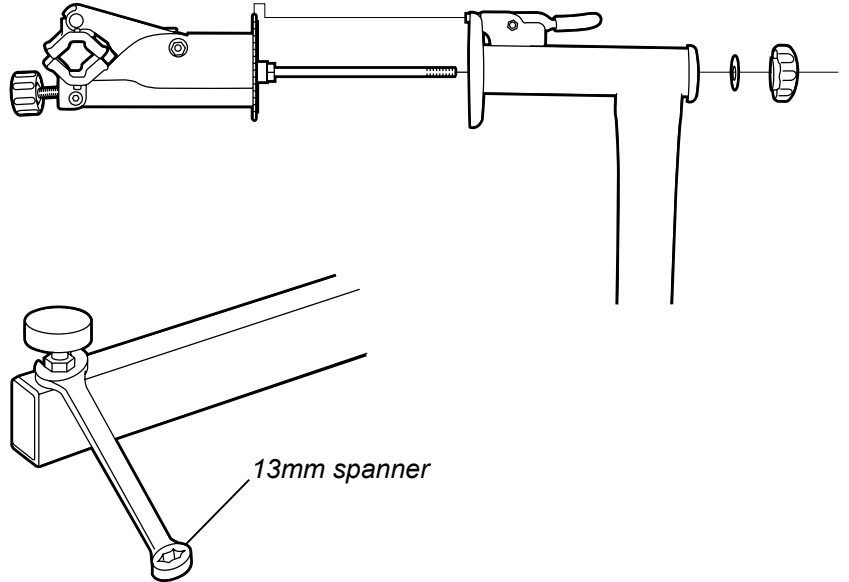
If not, adjust the length of the Adjusting Screw then tighten the lock nut firmly by a 13mm spanner.

This is very important to keep enough stability while your bike is on the stand.



**3**

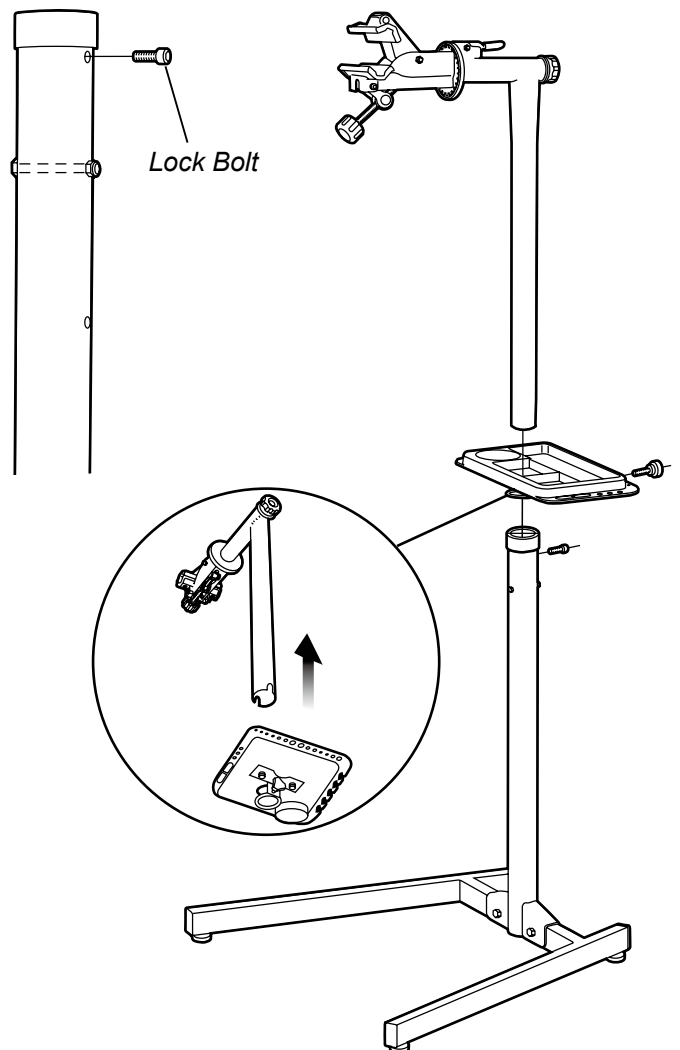
Assemble the clamp jaw unit to the Upper Pillar. The Back Knob should be tightened as firmly as possible until the clamp jaws rotates smoothly.



**4**

Insert the assembled Upper Pillar into the Lower Frame until the bottom cut-outs catch the Upper Pillar Holding Bolt, then tighten the Lock Bolt firmly by a 5mm hex wrench.

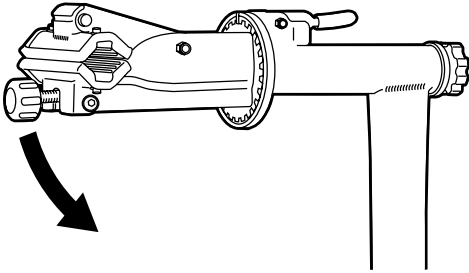
To install the optional Tool Tray, insert the tray into the Upper Pillar BEFORE assembling the frames. Fix the position, then tighten the knob bolt.



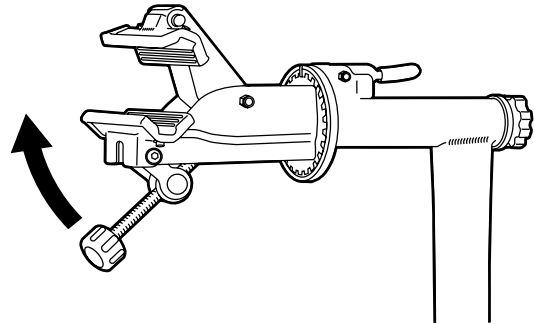
## HOW TO CLAMP YOUR BIKE

(Maximum Load Capacity: 40 kgs / 90 lbs)

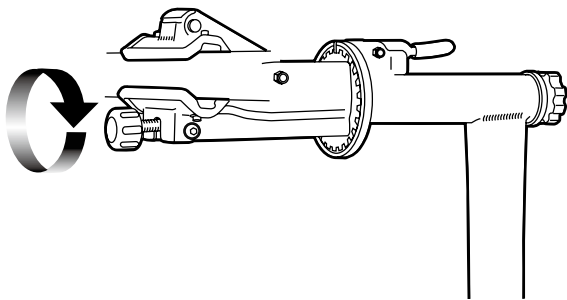
- 1** Pull down the Clamp Lever to open the jaws.



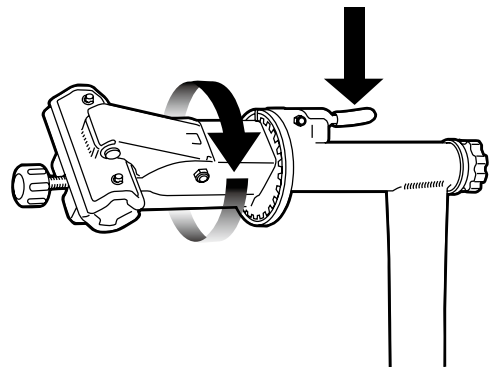
- 2** Place the top frame or the seat pillar onto the lower jaw, then fully pull up the Clamp Lever to close the jaws.



- 3** Turn the Clamp Adjust Knob clockwise to securely hold the bike. Turning counter-clockwise will widen the opening.



- 4** To rotate the clamp jaws, push down the Clutch Release Lever then rotate the jaws. Release your finger after confirming the ratch is securely engaged to the gear.



## ABOUT OUR WARRANTY PROGRAM

*You are covered under our warranty program for maximum **5 years** from the date of your purchase. Any defects caused by the manufacturer's mistake will be solved with this program at manufacturer's expense, but any problem caused by the user's misuse or natural worn will not be supported by this program.*

*Minoura does not owe any responsibility to any extra troubles these problems may bring.*

*For more detail, refer the attached "MINOURA LIMITED WARRANTY POLICY" card in the package.*

## CONTACT INFORMATION

### MINOURA NORTH AMERICA (for U.S. residents only)

1996 East Ave. Hayward, CA 94541 U.S.A.

Phone: 1-510-538-8599

Fax: 1-510-538-5899

Email: support@minourausa.com

### MINOURA JAPAN HEADQUARTERS (for all other customers)

1197-1 Godo, Anpachi, Gifu 503-2305 Japan

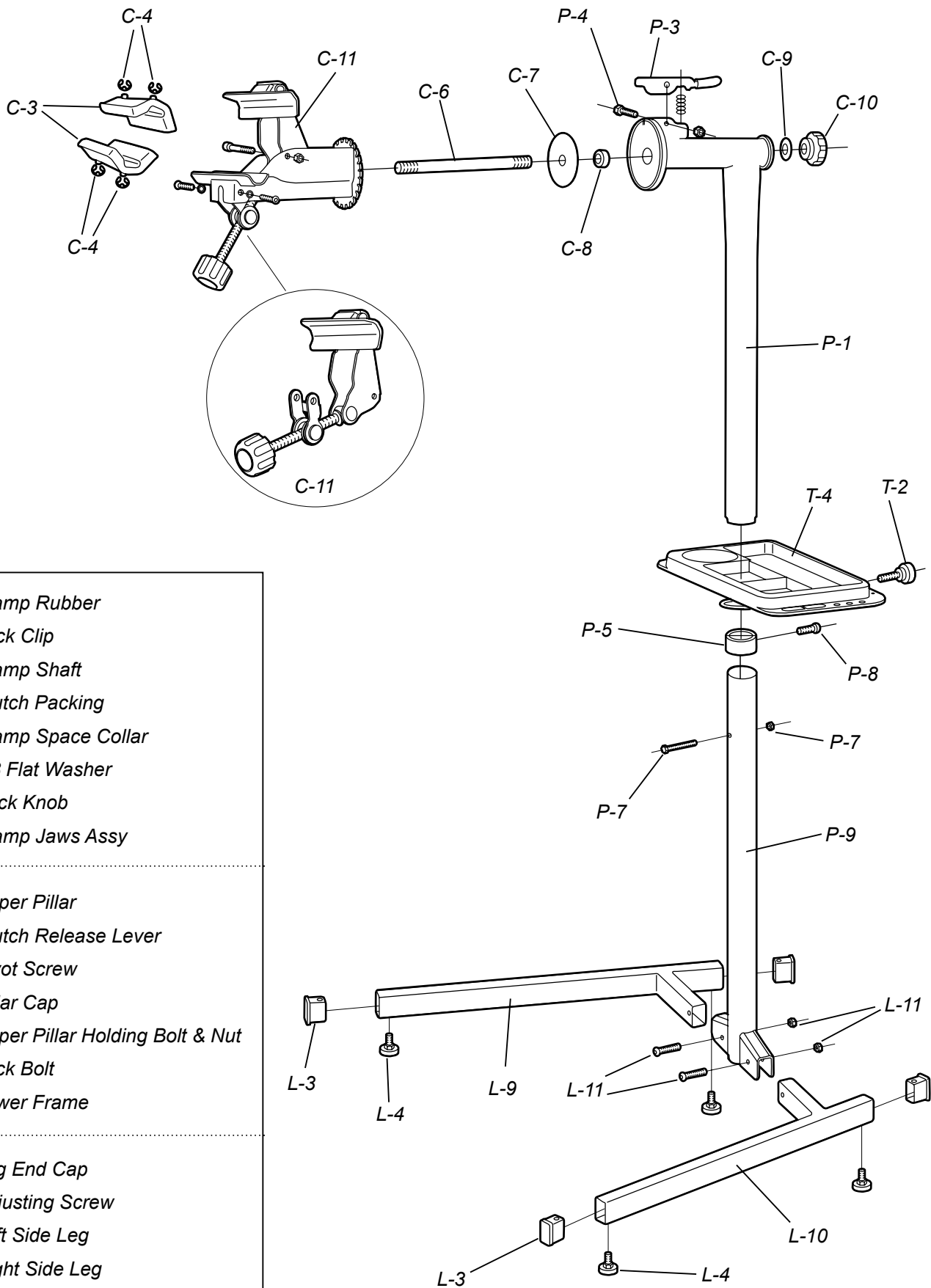
Fax: 81-584-27-7505

Email: minoura@minoura.jp

Web: www.minoura.jp

MADE IN JAPAN

# W-3100 / SMALL PARTS LIST



C-3: Clamp Rubber

C-4: Lock Clip

C-6: Clamp Shaft

C-7: Clutch Packing

C-8: Clamp Space Collar

C-9: M8 Flat Washer

C-10: Back Knob

C-11: Clamp Jaws Assy

P-1: Upper Pillar

P-3: Clutch Release Lever

P-4: Pivot Screw

P-5: Pillar Cap

P-7: Upper Pillar Holding Bolt & Nut

P-8: Lock Bolt

P-9: Lower Frame

L-3: Leg End Cap

L-4: Adjusting Screw

L-9: Left Side Leg

L-10: Right Side Leg

L-11: M8x40 Bolt & M8 Nylon Nut

T-2: Tray Fixing Knob Bolt

T-4: Tool Tray w/ tool slots