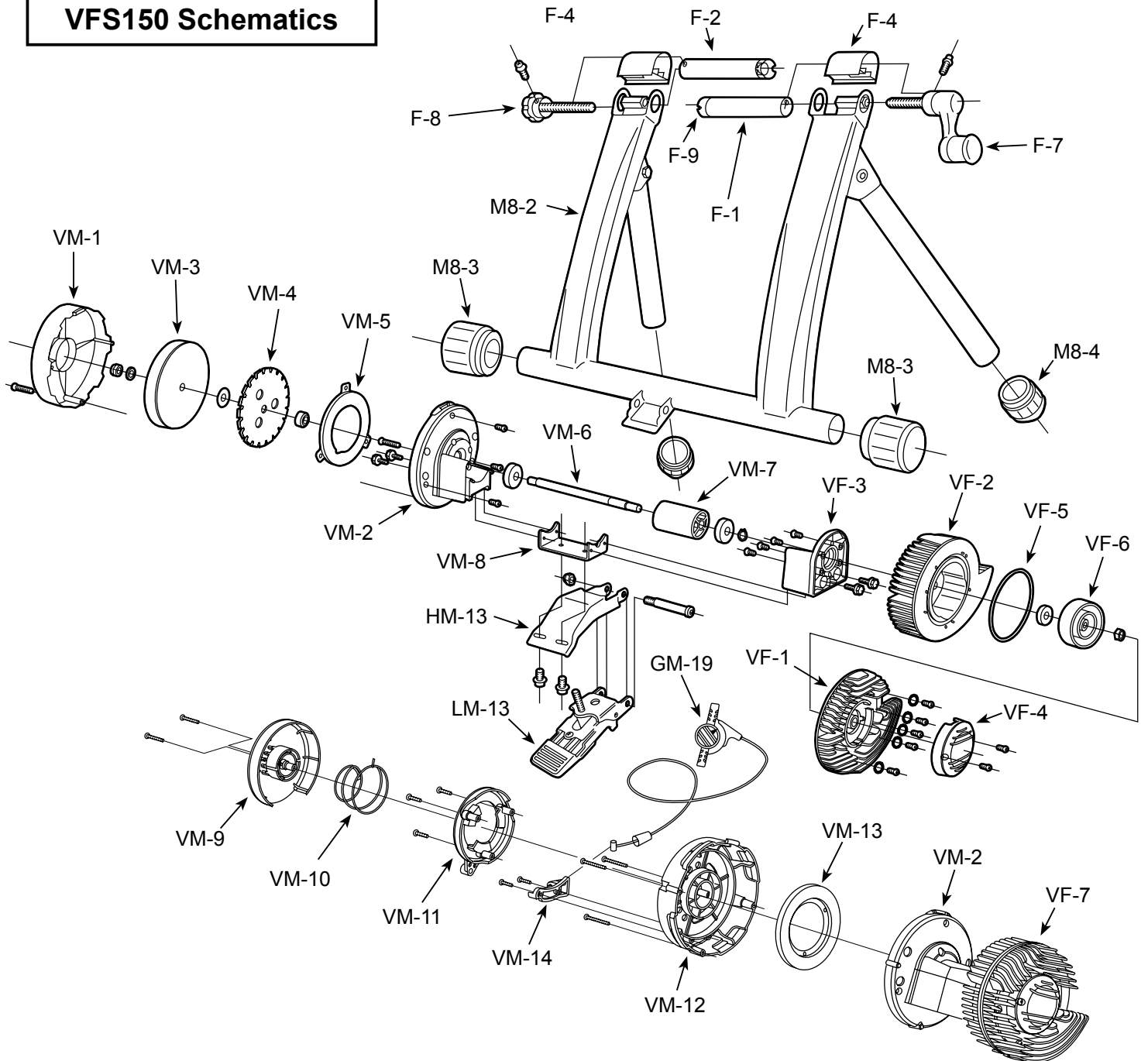


VFS150 Schematics



| | | | |
|-------|-------------------------------|-------|-------------------------------|
| F-1 | : Right Side Coupling | VF-6 | : Fluid Cup |
| F-2 | : Left Side Coupling | VF-7 | : Fluid Assy |
| F-4 | : Coupling Cover | VM-1 | : Flywheel Cover |
| F-7 | : Hub Handle | VM-2 | : Flywheel Side Inner Housing |
| F-8 | : Wheel Position Adjust Knob | VM-3 | : Flywheel (1.5 kgs) |
| F-9 | : Hub Nut Protector (Grommet) | VM-4 | : Alloy Rotor |
| M8-2 | : VFS Main Frame | VM-5 | : Magnet (non-remote) |
| M8-3 | : Rubber Cap (38mm) | VM-6 | : Axle |
| M8-4 | : Rubber Cap (35mm) | VM-7 | : Drive Roller |
| GM-19 | : Remote Shifter (Red) | VM-8 | : Connection Plate |
| HM-13 | : Base Plate | VM-9 | : Remote Outer Cover |
| LM-13 | : Foot Pedal | VM-10 | : Spring |
| VF-1 | : Fluid Outer Cover | VM-11 | : Remote Ring |
| VF-2 | : Fluid Main Case | VM-12 | : Outer Housing |
| VF-3 | : Fluid Side Inner Housing | VM-13 | : Magnet (remote) |
| VF-4 | : Fluid Outer Cap | VM-14 | : Remote Bracket |
| VF-5 | : Oil Seal ring | | |