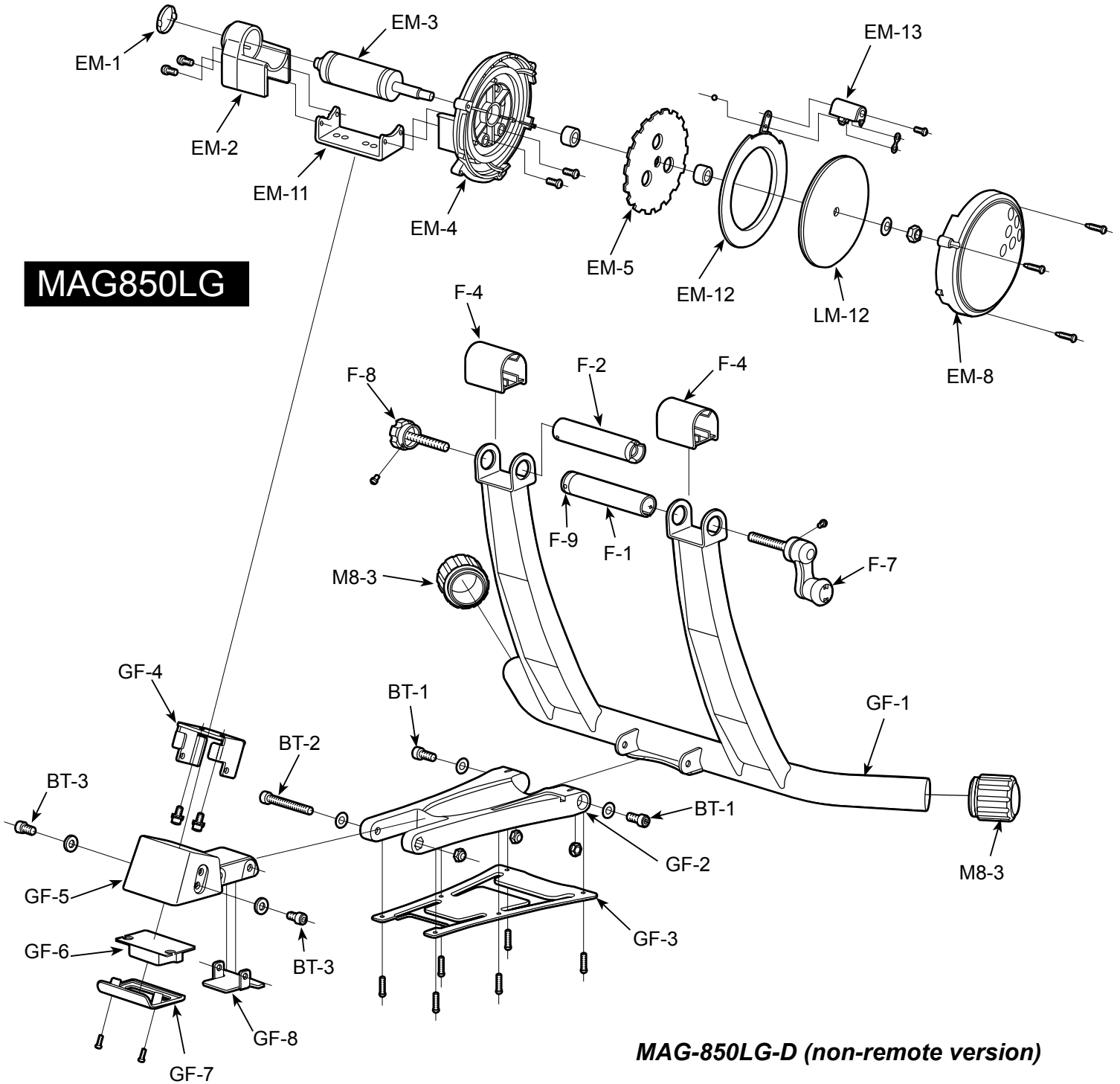


# MAG850LG



- |                               |                             |                            |
|-------------------------------|-----------------------------|----------------------------|
| BT-1: M8x20 Bolt              | F-1: Coupling Tune (Right)  | GF-1: Gravity Frame        |
| BT-2: M8x70 Bolt              | F-2: Coupling Tube (Left)   | GF-2: Sub Frame            |
| BT-3: M8x15 bolt              | F-4: Coupling Cover         | GF-3: Sub Frame Back Plate |
| EM-1: Outer Cap               | F-7: Hub Handle             | GF-4: Unit Base            |
| EM-2: Axle Holder             | F-8: Hub Knob Bolt          | GF-5: Mount Base           |
| EM-3: Drive Roller w/ Bearing | F-9: Coupling Grommet       | GF-6: Pad                  |
| EM-4: Main Housing            | LM-12: 850g Flywheel        | GF-7: Pad Cover            |
| EM-5: Alloy Rotor             | M8-3: 38mm Rubber Frame Cap | GF-8: Base Bracket         |
| EM-8: Flywheel Cover          |                             |                            |
| EM-11: Connection Plate       |                             |                            |
| EM-12: Dial Magnet Plate      |                             |                            |
| EM-13: Dial Lever             |                             |                            |